

# 2 Way Solenoid Valves

## Low Pressure Service

**Normally Closed and Normally Open Operation**  
**For Air, Gas, Steam And Liquids. 1/4" TO 3/4" BSP/NPT**



**SERIES**  
**FD 200**

**FLOCON** valves are direct lift solenoid operated valves. They are available in forged brass bodies, having soft seating for tight shut off on low pressure services. They are mainly used for gas pilot control on industrial power boilers and low pressure air, gas control or gas fired ovens and furnaces. These valves are also used in vacuum holding, automatic dispensing and other low pressure applications.

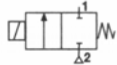
**IMPORTANT :**

NO MINIMUM OPERATING PRESSURE REQUIRED.

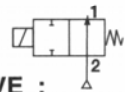
**SPECIFICATIONS :**

**OPERATION :**

a) Normally Closed : Open when energised;  
 closed when de-energised.



b) Normally Open : Closed when energised;  
 open when de-energised.



**VALVE :**

- 1) Forged brass / SS Valve body
- 2) Resilient seating for tight shut off.
- 3) Pipe connections suitable for 1/4", 3/8", 1/2" and 3/4" BSP / NPT.
- 3) Operating pressure from 0 Kg/cm<sup>2</sup> to 1 kg/cm<sup>2</sup>.

**SOLENOID :**

- 1) General purpose solenoid enclosure NEMA TYPE 1
- 2) All solenoid part in contact with fluid are made of 300 and 400 series stainless steel.
- 3) Continuous duty moulded coil.
- 4) Coil Voltages : 24, 48, 110, 220, 440 V A-C.  
 24, 48, 110 220 V.D-C.

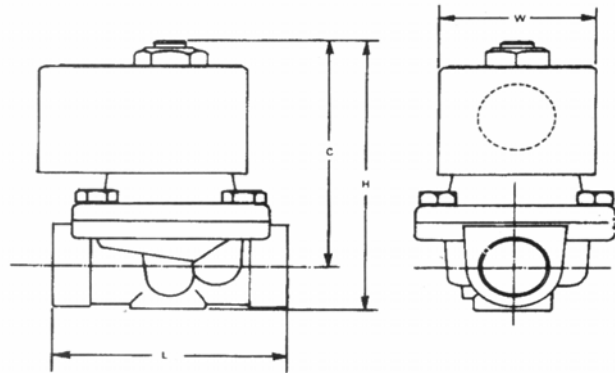
Inrush VA 60.

Holding VA 24

Watts 12.5

Ambient : 5°C to 50°C.

**FREQUENCY OF OPERATION**  
650 Cycles per minute



TYPE	PIPE SIZE	L mm	W mm	C mm	H mm
FD 202	1/4"	70	46	75	90
FD 203	3/8"				
FD 204	1/2"				
FD 206	3/4"			80	98

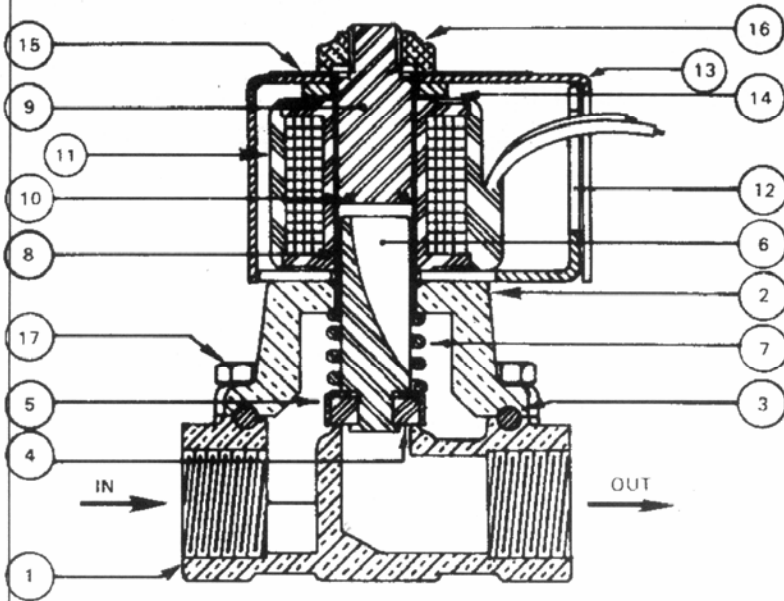
**FEATURES :**

- Direct operated • No minimum operating pressure required.
- Packless • Forged brass body. • S. S. Valve Body.
- Continuous duty moulded coil • Complete tight shut off.
- Silent in operation • Solenoid capable of being turned 360°
- Can be mounted in any position without affecting performance
- Can be mounted directly on pipe • Compact size.
- **FLOCON** valves are made from quality materials and rigorously tested for leakage and performance. Each valve is subjected to twice the rated voltage plus 1,000 Volts at 50C/S for 60 seconds for Insulation Test.
- **FLOCON** Valves are guaranteed for free replacement against any Manufacturing defect.

Valve Type	Pipe Size (inch)	Office Size (inch)	Maximum Operating Pressure Differential (in Kg/cm <sup>2</sup> )				Safe Body Working Pressure (Kg/cm <sup>2</sup> )	Maximum AC Fluid Temp. °C.	Cv Flow Factor	Watt Rating		VA-Inrush	VA-Holding	Class of coil Insulation
			Air Gas		Water Light Oil					AC	DC			
			AC	DC	AC	DC								
FD 202	1/4	5/16	1	0.25	1	0.25	20	95	1.5	12.5	13	60	24	B
FD 203	3/8	3/8	1	0.25	1	0.25	20	95	1.8	12.5	13	60	24	B
FD 204	1/2	7/16	1	0.5	1	0.5	20	95	2.8	12.5	13	60	24	B
FD 206	3/4	3/4	0.15	0.07	0.15	0.07	20	95	5	12.5	13	60	24	B



124- A-Z INDUSTRIAL ESTATE, G. K. MARG, MUMBAI - 400 013 TEL. : 2492 6384 / 2492 4333 FAX : 2497 4299  
 E-mail : flocon@bom3.vsnl.net.in Website : www.floconvalves.com

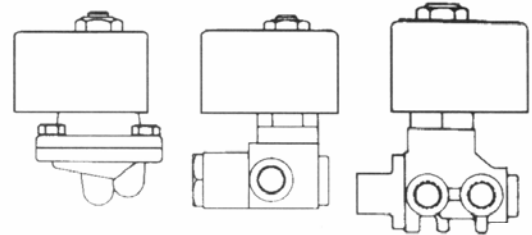


**ORDERING INFORMATION :**

We must have Type, Pipe size  
Operating Pressure, Operating  
Voltage and Media handled.

**IMPORTANT :**

Use Strainers with the valves. Use  
the valves only at pressure and  
voltage specified on the name plate.



**NOTE :**

*In line with their policy of continuous product  
development, the manufacturer reserves the right  
to change specifications without notice.*

SR. NO.	NAME OF THE PART	PART NO.	MATERIAL	QTY.
1.	VALVE BODY	FD 20 X 01	F. BRASS	1
2.	BONNET	FD 20 X 02	F. BRASS	1
3.	'O' RING	FD 20 X 03	NEOPRENE	1
4.	SEAT	FD 20 X 04	NEOPRENE	1
5.	SEAT CAP	FD 20 X 05	BRASS	1
6.	PLUNGER	FD 20 X 06	S.S. 410	1
7.	PLUNGER SPRING	FD 20 X 07	S.S. 304	1
8.	TUBE	FD 20 X 08	S.S. 304	1
9.	STOPPER	FD 20 X 09	S. S. 410	1
10.	SHADING RING	FD 20 X 10	COPPER	1
11.	COIL	FD 20 X 11	ENAMELLED C. W.	1
12.	BASE PLATE	FD 20 X 12	.C. R. C. A.	1
13.	TOP COIL HOUSING	FD 20 X 13	C. R. C. A	1
14.	SPRING WASHER	FD 20 X 14	SP STEEL	1
15.	NAME PLATE	FD 20 X 15	ALUMINIUM	1
16.	TOP NUT	FD 20 X 16	ALUMINIUM	1
17.	SCREWS	FD 20 X 17	ALLOY STEEL	4



AGENCY APPROVALS FOR «FLOCON» SOLENOID VALVES PRECISION INSTRUMENT CO. - MUM-13.

ENGINEERS INDIA LIMITED	NEW DELHI	EIL	SOLENOID VALVES
ELECTRONICS REGIONAL TEST LABORATORY	MUMBAI	ERTL	DAMP HEAT TEST REPORT
ELECTRONICS REGIONAL TEST LABORATORY	MUMBAI	ERTL	VIBRATION TEST REPORT
INSTITUTE FOR DESIGN OF ELECTRICAL MEASURING INSTRUMENTS	MUMBAI	IDEMI	IP-65 TEST REPORT
INSTITUTE FOR DESIGN OF ELECTRICAL MEASURING INSTRUMENTS	MUMBAI	IDEMI	IP-65/67 TEST REPORT
CENTRAL MINING RESEARCH INSTITUTE	DHANBAD	CMRI	FLAME PROOF SOLENOID VALVE ENCLOSURE
CHIEF CONTROLLER OF EXPLOSIVES	NAGPUR	CCE	FLAMEPROOF SOLENOID VALVE ENCLOSURE
BUREAU OF INDIAN STANDARDS	MUMBAI	BIS	FLAMEPROOF SOLENOID VALVE ENCLOSURE
DIRECTORS GENERAL FACTORY ADVICE SERVICE & LABOUR INSTITUTE	MUMBAI	DGFASLI	FLAMEPROOF SOLENOID VALVE ENCLOSURE
GENELEC LIMITED	MUMBAI	GENELEC	IP-55

**MANUFACTURERS :**

**PRECISION  
INSTRUMENT  
CO.**

**WORKS :**

124, A-Z INDUSTRIAL ESTATE,  
G. K. MARG, LOWER PAREL, MUMBAI - 400 013.  
PHONE : 2492 6384, 2492 4333  
FAX : 022-2497 4299.



Where the Quality goes in before the Name comes on.