

2 - WAY SOLENOID VALVES

NORMALLY CLOSED

FOR AIR, GAS, WATER, LIGHT HYDRAULIC OIL

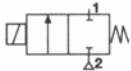


FD - 208	[1" BSP (F)]
FD - 209	[1 1/4" BSP (F)]
FD - 2010	[1 1/2" BSP (F)]
FD - 2012	[2" BSP (F)]

◀FLOCON▶ 2-Way Direct Operated Solenoid Valves have cast Bronze bodies and soft resilient seating which gives complete tight shut off. These valves are equipped with powerful Solenoids that provide higher efficiency and flow capacities than most comparable valves.

SPECIFICATION :
OPERATION :

NORMALLY CLOSED : Valve open when Energised
Closed when De - Energised.



- APPLICATION** :
- (i) Gas Fired Burners
 - (ii) Furnaces
 - (iii) Boilers
 - (iv) Ovens
 - (v) Heating Plants

VALVE :

1. Direct operated
2. Pipe connections suitable for 1", 1 1/2", 2" BSP (F) / NPT (F).
3. Cast Bronze body.
4. Soft resilient seating.

SOLENOID :

1. General purpose Solenoid Enclosure Nema type 4, IP20, IP40.
2. Dust Proof, Watertight Solenoid Enclosure IP55, IP65.
3. Flame Proof as per IS2148 of 1981 for Group, I, IIA & IIB.
4. Class F, Class H Insulation.
5. Standard Voltages - 24, 48, 110, 220, 440 Volts 50 C/s AC.
24, 48, 110, 220 VDC.
6. Ambient - 5° to 50°C.

FEATURES :

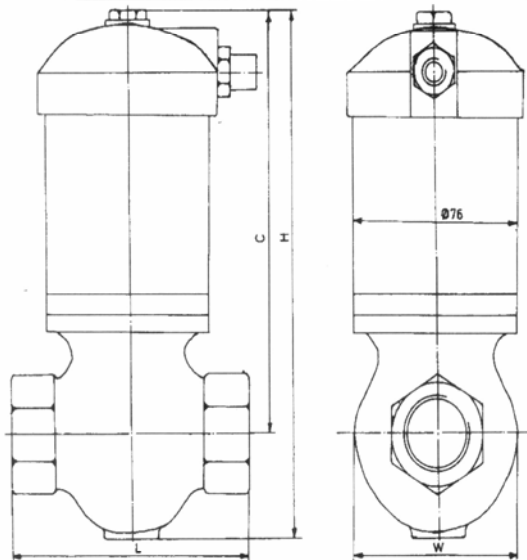
1. Packless
2. C. Bronze body
3. Complete tight shut off.
4. Continuous duty moulded coil.
5. Silent in operation.
6. Solenoid capable of being turned 360°.
7. No minimum operating press required.

◀FLOCON▶ Valves are made from quality materials and rigorously tested for leakage and performance. Each Valve is subjected to twice the rated voltage plus 1000 Volts at 50 c/s for seconds for insulation test.

◀FLOCON▶ Valves are guaranteed for free replacement against any manufacturing defect.



FD-200 SERIES

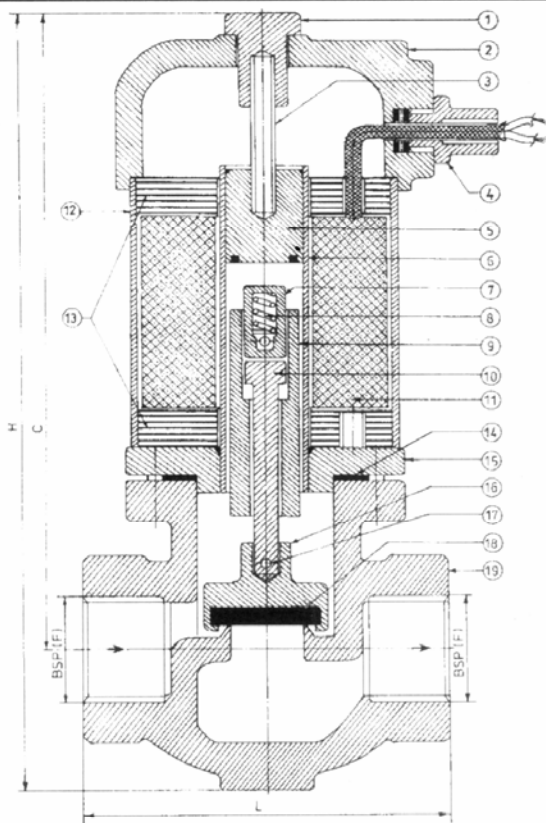


VALVE TYPE	PIPE - SIZE (INCH)	ORIFIC - SIZE INCH	Minimum Operating Pressure Differential (KG/CM ²)	MAXIMUM OPERATING PRESSURE DIFFERENTIAL (KG/CM ²)				SAFE BODY WORKING PRESSURE (KG/CM ²)	FLOW FACTOR CV	MAXIMUM FLUID TEMPERATURE °C	WATT RATING		VA - INRUSH	VA - HOLDING
				AIR, GAS		WATER, OIL					AC	DC		
				AC	DC	AC	DC							
FD 208	1"	13/16"	0	0.3	0.25	0.3	0.25	15	7.5	85	25	25	70	50
FD 209	1 1/4"	1 1/16"	0	0.25	0.2	0.25	.02	15	13	85	25	25	70	50
FD 210	1 1/2"	1 1/16"	0	0.2	0.15	0.2	0.15	15	13	85	25	25	70	50
FD 2012	2"	1 3/16"	0	0.2	0.15	0.2	0.15	15	17	85	25	25	70	50

TYPE	PIPE SIZE	L mm	W mm	C mm	H mm
FD 208	1"	106±1.5	71	184±3	222±3
FD 209	1 1/4"	131±2	87	200±3	248±3
FD 2010	1 1/2"	131±2	87	200±3	248±3
FD 2012	2"	180±2	101	214±3	268±3

◀FLOCON▶ **PRECISION INSTRUMENT CO.**

124- A-Z INDUSTRIAL ESTATE, G. K. MARG, MUMBAI - 400 013. TEL. : 2492 6384 / 2492 4333 FAX : 2497 4299
E-mail : flocon@bom3.vsnl.net.in Website : www.floconvalves.com



ORDERING INFORMATION :

We must have Type, Pipe size
Operating Pressure, Operating
Voltage and Media handled.

IMPORTANT :

Use Strainers with the valves. Use
the only at pressure and voltage
specified on the name plate.

NOTE :

*In line with their policy of continous product
development, the manufacturer reserves the right
to change specifications without notice.*

No.	PART DESCRIPTION	MATERIAL	PART No.	QTY.
1.	TOP NUT	BRASS	FD-20001	1
2.	CAP	ALUMINIUM	FD-20002	1
3.	SCREW	M. S. PLATED	FD-20003	1
4.	TAIL-END	ALUMINIUM	FD-20004	1
5.	STOPPER	S. S. 430	FD-20005	1
6.	TUBE	SS-304	FD-20006	1
7.	RETAINER	BRASS	FD-02007	1
8.	SPRING	SP. STEEL	FD-20008	1
9.	PLUNGER	SS-430	FD-20009	1
10.	BRASS PIN	BRASS	FD-20010	1
11.	COIL	COPPER	FD-20011	1
12.	COIL HOUSING	M. STEEL	FD-20012	1
13.	LAMINATIONS	SIL-STEEL	FD-20013	1
14.	GASKET	ASBESTOS	FD-20014	1
15.	FLANGE	C. BRONZE	FD-20015	1
16.	FERRULE	BRASS	FD-20016	1
17.	RIVET	COPPER	FD-20017	1
18.	SEAT	NEOPRENE	FD-20018	1
19.	BODY	C. BRONZE	FD-20019	1



ENGINEERS
INDIA LIMITED

IS 2148



AGENCY APPROVALS FOR **FLOCON**® SOLENOID VALVES PRECISION INSTRUMENT CO. - MUM-13.

ENGINEERS INDIA LIMITED	NEW DELHI	EIL	SOLENOID VALVES
ELECTRONICS REGIONAL TEST LABORATORY	MUMBAI	ERTL	DAMP HEAT TEST REPORT
ELECTRONICS REGIONAL TEST LABORATORY	MUMBAI	ERTL	VIBRATION TEST REPORT
INSTITUTE FOR DESIGN OF ELECTRICAL MEASURING INSTRUMENTS	MUMBAI	IDEMI	IP-65 TEST REPORT
INSTITUTE FOR DESIGN OF ELECTRICAL MEASURING INSTRUMENTS	MUMBAI	IDEMI	IP-65/67 TEST REPORT
CENTRAL MINING RESEARCH INSTITUTE	DHANBAD	CMRI	FLAME PROOF SOLENOID VALVE ENCLOSURE
CHIEF CONTROLLER OF EXPLOSIVES	NAGPUR	CCE	FLAMEPROOF SOLENOID VALVE ENCLOSURE
BUREAU OF INDIAN STANDARDS	MUMBAI	BIS	FLAMEPROOF SOLENOID VALVE ENCLOSURE
DIRECTORS GENERAL FACTORY			
ADVICE SERVICE & LABOUR INSTITUTE	MUMBAI	DGFASLI	FLAMEPROOF SOLENOID VALVE ENCLOSURE
GENELEC LIMITED	MUMBAI	GENELEC	IP-55

MANUFACTURERS :

**PRECISION
INSTRUMENT
CO.**

WORKS :

124, A-Z INDUSTRIAL ESTATE,
G. K. MARG, LOWER PAREL, MUMBAI - 400 013.
PHONE : 2492 6384, 2492 4333 • FAX : 022- 24974299.



Where the Quality goes in before the Name comes on.