

# 2-WAY SOLENOID VALVES

Normally Closed & Normally Open operation • For Air, Gas, water light Hydraulic Oil, Hot Water and Steam • 1/4" TO 3/4" BSP/NPT



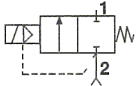
**FLOCON** two way servo operated solenoid valves have compact brass forged bodies and soft seating for complete tight shut off.

These valves are equipped with powerful solenoids that provide higher operating pressures and flow capacities than most comparable valves now available.

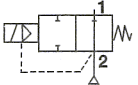
## SPECIFICATIONS :

### OPERATION :

A) Normally Closed : Valve opens when energised; closed when de-energised.



B) Normally Open: Valve closed when energised; open when de-energised.



### VALVE :

- 1) Servo operated with inlet fluid pressure.
- 2) Pipe connections suitable for 1/4", 3/8", 1/2" and 3/4" BSP / NPT.
- 3) Forged brass body.
- 4) Resilient or Teflon seating.

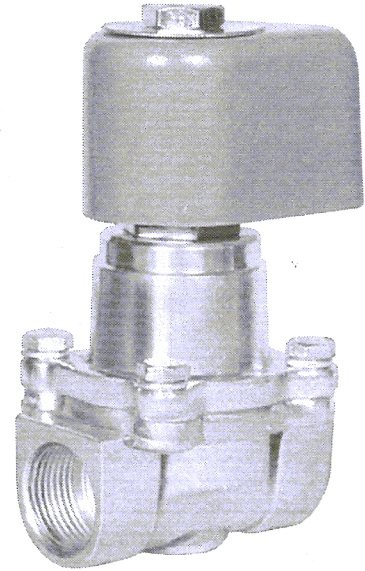
### SOLENOID :

- 1) General purpose solenoid enclosure NEMA TYPE 1
- 2) All solenoid parts made of 300 and 400 series stainless steel.
- 3) Continuous duty coil.
- 4) Class F insulation and moulded class B insulation
- 5) Standard Voltages : 24, 48, 110, 220, 440 V A-C.  
24, 48, 110, 220 V D-C.
- 6) Ambient: 5°C to 50°

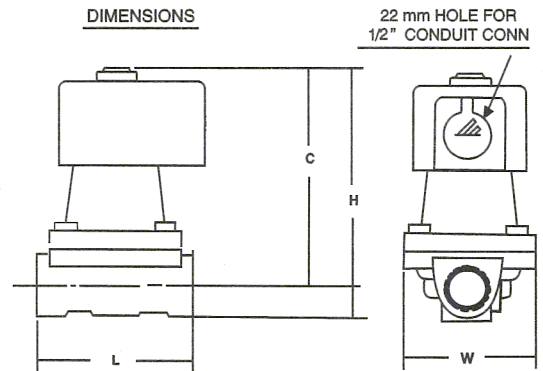
**FREQUENCY OF OPERATION**  
650 Cycles per minute

### FEATURES :

- Packless.
- Forged brass
- S.S. valve body
- Complete tight shut off.
- Compact size.
- Continuous duty moulded coil.
- Silent in operation.
- Full flow conditions.
- Solenoid capable of being turned 360°
- **FLOCON** Valves are made from quality materials and rigorously tested for leakage and performance. Each valve is subjected to twice the rated voltage plus 1,000 Volts at 50C/S for 60 seconds for Insulation Test.
- **FLOCON** valves are guaranteed for free replacement against any manufacturing defect.



### DIMENSIONS

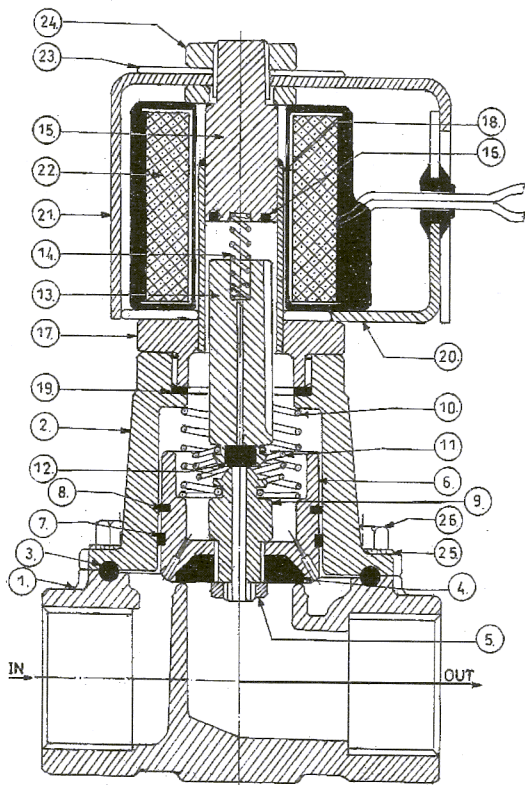


TYPE	PIPE SIZE	L mm	W mm	C mm	H mm
FS 202	1/4"	70	58	110	125
FS 203	3/8"				
FS 204	1/2"			115	133
FS 206	3/4"				

VALVE TYPE	Pipe Size (inch)	Orifice size (inch)	Minimum Operating Pressure Differential (KG/CM <sup>2</sup> )	Maximum Operating Pressure Differential (KG/CM <sup>2</sup> )				Safe Body Working Pressure (KG/CM <sup>2</sup> )	Flow Factor CV	Maximum Fluid Temperature °C		WATT RATING		VA - INRUSH	VA - HOLDING
				AIR, GAS		WATER, OIL				Class B Coil	Class F Coil	AC	DC		
				AC	DC	AC	DC								
FS 202	1/4	1/2	0.3	14	8	9	7	20	1.8	95	150	12.5	13	60	24
FS 203	3/8	5/8	0.3	14	8	9	7	20	3	95	150	12.5	13	60	24
FS 204	1/2	5/8	0.3	14	8	9	7	20	4	95	150	12.5	13	60	24
FS 206	3/4	3/4	0.3	8	7	8	5	20	5	95	150	12.5	13	60	24

**FLOCON** PRECISION INSTRUMENT CO

124- A-Z INDUSTRIAL ESTATE, G. K. MARG, MUMBAI - 400 013 TEL. : 2492 6384 / 2492 4333 FAX : 2497 4299  
E-mail : flocon@bom3.vsnl.net.in Website : www.floconvalves.com

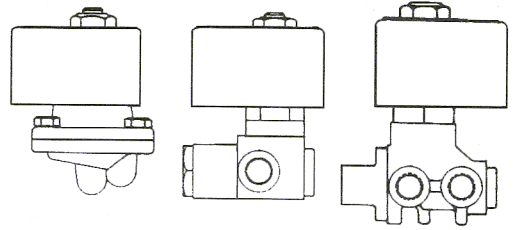


**ORDERING INFORMATION :**

We must have Type, Pipe size  
Operating Pressure, Operating  
Voltage and Media handled.

**IMPORTANT :**

Use Strainers with the valves. Use  
the valves only at pressure and  
voltage specified on the name plate.



**NOTE :**

*In line with their policy of continuous product  
development, the manufacturer reserves the right  
to change specifications without notice.*

SR. NO.	NAME OF PART	PART NO.	MATERIAL	QTY.
1.	VALVE BODY	FS 20 X 01	BRASS (FORGED)	1
2.	BONNET	FS 20 X 02	BRASS (FORGED)	1
3.	'O' RING	FS 20 X 03	NEOPRENE	1
4.	DISC	FS 20 X 04	NEOPRENE/TEFLON	1
5.	DISC NUT	FS 20 X 05	S.S. 304	1
6.	PISTON	FS 20 X 06	BRASS	1
7.	RIDER RING	FS 20 X 07	TEFLON	1
8.	PISTON RING	FS 20 X 08	TEFLON	1
9.	SEAT	FS 20 X 09	S.S. 304	1
10.	PISTON SPRING	FS 20 X 10	S.S. 304	1
11.	PLUNGER SPRING	FS 20 X 11	S.S. 304	1
12.	PLUNGER SEAT	FS 20 X 12	NEOPRENE/TEFLON	1
13.	PLUNGER	FS 20 X 13	S. S. 410	1
14.	PLUNGER SPRING	FS 20 X 14	S. S. 304	1
15.	STOPPER	FS 20 X 15	S. S. 410	1
16.	SHADING RING	FS 20 X 16	COPPER	1
17.	TUBE NUT	FS 20 X 17	BRASS	1
18.	TUBE	FS 20 X 18	S. S. 304	1
19.	GASKET	FS 20 X 19	NEOPRENE/TEFLON	1
20.	BASE PLATE	FS 20 X 20	C.R.C.A.	1
21.	TOP COIL HOUSING	FS 20 X 21	C.R.C.A.	1
22.	COIL	FS 20 X 22	ENAMELLED C. W.	1
23.	NAME PLATE	FS 20 X 23	ALUMINIUM	1
24.	TOP NUT	FS 20 X 24	BRASS	1
25.	SPRING WASHER	FS 20 X 25	SPRING STEEL	1
26.	SCREWS WITH WASHERS	FS 20 X 26	ALLOY STEEL	4

Insert Value type No. 2,3,4 or 6 in place of X for Pipe sizes 1/4", 3/8, 1/2" and 3/4" respectively.



AGENCY APPROVALS FOR FLOCON® SOLENOID VALVES PRECISION INSTRUMENT CO. - MUM-13.

ENGINEERS INDIA LIMITED	NEW DELHI	EIL	SOLENOID VALVES
ELECTRONICS REGIONAL TEST LABORATORY	MUMBAI	ERTL	DAMP HEAT TEST REPORT
ELECTRONICS REGIONAL TEST LABORATORY	MUMBAI	ERTL	VIBRATION TEST REPORT
INSTITUTE FOR DESIGN OF ELECTRICAL MEASURING INSTRUMENTS	MUMBAI	IDEMI	IP-65 TEST REPORT
INSTITUTE FOR DESIGN OF ELECTRICAL MEASURING INSTRUMENTS	MUMBAI	IDEMI	IP-65/67 TEST REPORT
CENTRAL MINING RESEARCH INSTITUTE	DHANBAD	CMRI	FLAME PROOF SOLENOID VALVE ENCLOSURE
CHIEF CONTROLLER OF EXPLOSIVES	NAGPUR	CCE	FLAMEPROOF SOLENOID VALVE ENCLOSURE
BUREAU OF INDIAN STANDARDS	MUMBAI	BIS	FLAMEPROOF SOLENOID VALVE ENCLOSURE
DIRECTORS GENERAL FACTORY ADVICE SERVICE & LABOUR INSTITUTE	MUMBAI	DGFASLI	FLAMEPROOF SOLENOID VALVE ENCLOSURE
GENELEC LIMITED	MUMBAI	GENELEC	IP-55

**MANUFACTURERS :**

**PRECISION  
INSTRUMENT  
CO.**

**WORKS :**

124, A-Z INDUSTRIAL ESTATE,  
G. K. MARG, LOWER PAREL, MUMBAI - 400 013.  
PHONE : 2492 6384, 2492 4333  
FAX : 022-2497 4299.



Where the Quality goes in before the Name comes on.