

2 WAY SOLENOID VALVES



NORMALLY CLOSED AND NORMALLY OPEN OPERATION FOR AIR, GAS, WATER LIGHT HYDRAULIC OIL

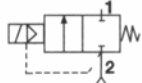
FS - 208	[1" BSP (F)]
FS - 209	[1 1/4" BSP (F)]
FS - 2010	[1 1/2" BSP (F)]
FS - 2012	[2" BSP (F)]

◀FLOCON▶ 2-way Servo Operated Solenoid Valves have cast Bronze bodies and Metal to Metal seating which gives complete tight shut off. These valves are equipped with powerful Solenoids that provide higher operating pressure and flow capacities than most comparable valves.

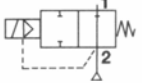
SPECIFICATIONS :

OPERATION :

- a) **NORMALLY CLOSED** : Valve open when Energised
Closed when De - Energised.



- b) **NORMALLY OPEN** : Valve Closed when energised;
Open when De-energised.



VALVE :

- Servo operated with inlet fluid pressure.
- Pipe connections suitable for 1", 1 1/4", 1 1/2" and 2" BSP / NPT.
- Cast Bronze body.
- Metal to Metal seating.

SOLENOID :

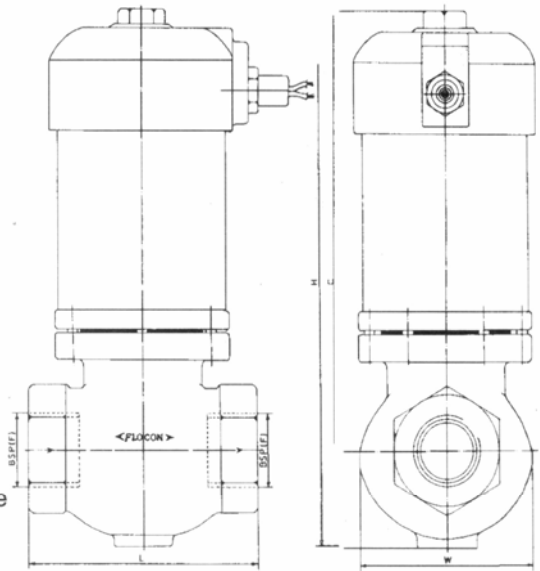
- General purpose solenoid enclosure NEMA TYPE 4, IP20, IP40.
- Dust PProof, Watertight Solenoid Enclosure IP55, IP65.
- Flame Proof as per IS2148 of 1981 for Group, I IIA & IIB.
- Class F, Class H Insulation.
- Standard Voltages - 24,48,110, 220, 440 Volts 50 C/s AC.
24, 48,110,220 VCD.
- Ambient - 5° to 50°C.

FEATURES :

- Packless.
 - C Bronze body
 - Complete tight shut off.
 - Continuous duty moulded coil.
 - Silent in operation.
 - Solenoid capable of being turned 360°.
- NOTE :** Valves are manufactured for Steam Application upto 150°C.

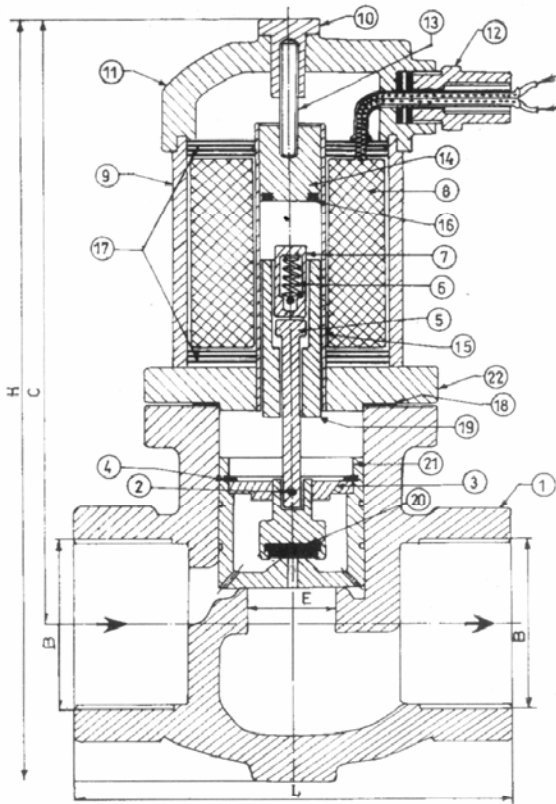
◀FLOCON▶ Valves are made from quality materials and rigorously tested for leakage and performance. Each Valve is subjected to twice the rated voltage plus 1000 Volts at 50 c/s for 60 seconds for Insulation test.

◀FLOCON▶ Valves are guaranteed for free replacement against any manufacturing defect.



VALVE TYPE	PIPE - SIZE (INCH)	ORIFIC - SIZE INCH	Minimum Operating Pressure Differential (KG/CM ²)	MAXIMUM OPERATING PRESSURE DIFFERENTIAL (KG/CM ²)				SAFE BODY WORKING PRESSURE (KG/CM ²)	FLOW FACTOR CV	MAXIMUM FLUID TEMPERATURE °C	WATT RATING		VA - INRUSH	VA - HOLDING
				AIR, GAS		WATER, OIL					AC	DC		
				AC	DC	AC	DC							
FS 208	1"	13/16"	0.5	10	9	10	9	15	7.5	150	25	25	70	50
FS 209	1 1/4"	1 1/16"	0.5	10	9	10	9	15	13	150	25	25	70	50
FS 210	1 1/2"	1 1/16"	0.5	10	9	10	9	15	13	150	25	25	70	50
FS 2012	2"	1 3/16"	0.5	10	9	10	9	15	17	150	25	25	70	50

TYPE	PIPE SIZE	L mm	W mm	C mm	H mm
FS 208	1"	106±1.5	71	184±3	222±3
FS 209	1 1/4"	131±2	87	200±3	248±3
FS 2010	1 1/2"	131±2	87	200±3	248±3
FS 2012	2"	180±2	101	214±3	268±3



ORDERING INFORMATION :

We must have Type, Pipe size
Operating Pressure, Operating
Voltage and Media handled.

IMPORTANT :

Use Strainers with the valves. Use
the valves only at pressure and
voltage specified on the name plate.

NOTE :

*In line with their policy of continous product
development, the manufacturer reserves the right
to change specifications without notice.*

No.	PART DESCRIPTION	MATERIAL	PART No.	QTY.
1.	MAIN BODY	C. BRONZE	FS-200-101	1
2.	RIVET	COPPER	FS-200-102	1
3.	PISTON RING	BRASS	FS-200-103	1
4.	CIRCLIP	C. STEEL	FS-200-104	1
5.	BRASS PIN	BRASS	FS-200-105	1
6.	SPRING	S. STEEL	FS-200-106	1
7.	RETAINER	BRASS	FS-200-107	1
8.	COIL	E. COPPER	FS-200-108	1
9.	COIL - HOUSING	C. R. C. A.	FS-200-109	1
10.	TOP NUT	BRASS	FS-200-110	1
11.	CAP	ALUMINIUM	FS-200-111	1
12.	TAIL - END	ALUMINIUM	FS-200-112	1
13.	SCREW	C. STEEL	FS-200-113	1
14.	STOPPER	SS-430	FS-200-114	1
15.	TUBE	SS-304	FS-200-115	1
16.	SHADING RING	COPPER	FS-200-116	1
17.	LAMINATION	SIL-STEEL	FS-200-117	1
18.	GASKET	ASBESTOS	FS-200-118	1
19.	PLUNGER	SS-430	FS-200-119	1
20.	PISTON - SEAT	NEOP / VITON	FS-200-120	1
21.	PISTON	BRASS / S.S.	FS-200-121	1
22.	FLANGE	C. BRONZE	FS 200-122	1



ENGINEERS
INDIA LIMITED

IS 2148



AGENCY APPROVALS FOR FLOCON® SOLENOID VALVES PRECISION INSTRUMENT CO. - MUM-13.

ENGINEERS INDIA LIMITED	NEW DELHI	EIL	SOLENOID VALVES
ELECTRONICS REGIONAL TEST LABORATORY	MUMBAI	ERTL	DAMP HEAT TEST REPORT
ELECTRONICS REGIONAL TEST LABORATORY	MUMBAI	ERTL	VIBRATION TEST REPORT
INSTITUTE FOR DESIGN OF ELECTRICAL MEASURING INSTRUMENTS	MUMBAI	IDEMI	IP-65 TEST REPORT
INSTITUTE FOR DESIGN OF ELECTRICAL MEASURING INSTRUMENTS	MUMBAI	IDEMI	IP-65/67 TEST REPORT
CENTRAL MINING RESEARCH INSTITUTE	DHANBAD	CMRI	FLAME PROOF SOLENOID VALVE ENCLOSURE
CHIEF CONTROLLER OF EXPLOSIVES	NAGPUR	CCE	FLAMEPROOF SOLENOID VALVE ENCLOSURE
BUREAU OF INDIAN STANDARDS	MUMBAI	BIS	FLAMEPROOF SOLENOID VALVE ENCLOSURE
DIRECTORS GENERAL FACTORY			
ADVICE SERVICE & LABOUR INSTITUTE	MUMBAI	DGFASLI	FLAMEPROOF SOLENOID VALVE ENCLOSURE
GENELEC LIMITED	MUMBAI	GENELEC	IP-55

MANUFACTURERS :

**PRECISION
INSTRUMENT
CO.**

WORKS :

124, A-Z INDUSTRIAL ESTATE,
G. K. MARG, LOWER PAREL, MUMBAI - 400 013.
PHONE : 2492 6384, 2492 4333 • FAX : 022-2497 4299.



Where the Quality goes in before the Name comes on.