

DIAPHRAGM OPERATED 2-WAY SOLENOID VALVES

Normally Closed & Normally Open

For Air, Gas, Water and Light Hydraulic Oil 1/4" TO 2" BSP/NPT



FLOCON 2 Way diaphragm operated packless valves are for normally closed and normally open operation. These valves are ideally used for handling light oils and fluids upto 300 s.s.u. viscosity

NO MINIMUM OPERATING PRESSURE REQUIRED

Special valves available for

- dry air-gas
- continuous cycling
- exceptionally long life
- heavy duty operation
- clickless and quiet (no A-C hum operation).

APPLICATIONS :

These 2 way valves are extensively used in

- Oil furnaces,
- Compressors
- Pumps
- Laundry
- Water treatment plants.

SPECIFICATIONS

OPERATIONS :-:

Two types are available :

- Normally Closed : Valves closed when de-energized, open when energized
- Normally Open : Valves closed when energized, open when de-energized.

VALVE :

- Body material • Forged brass • Cast gunmetal
- Stainless Steel (300 series) Aluminium • Pipe sizes : 1/4" to 2" BSP / NPT • Seats and discs : Neoprene or Teflon • Operation Pressure : 0 to 10 kg/cm²

SOLENOID :

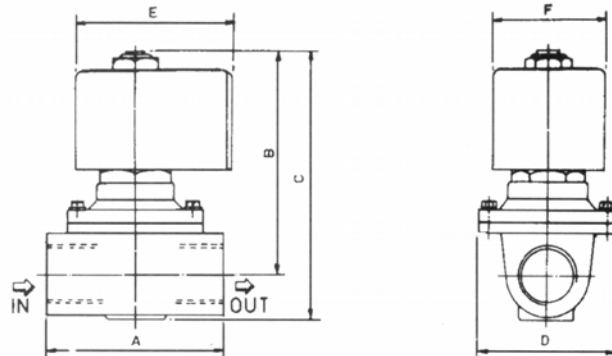
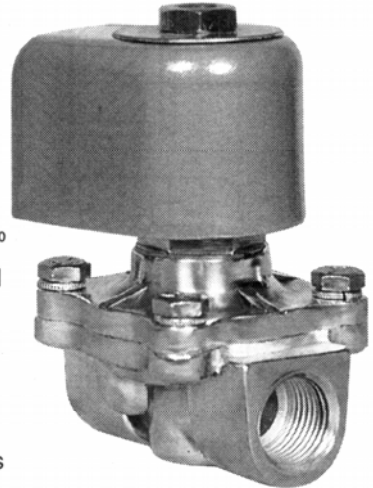
- General purpose enclosure NEMA type 1
- Watertight and dustproof NEMA type 2 & 3R
- All solenoid parts in contact with media are made of 300 and 400 series stainless steel.
- Continuous duty moulded coil.
- Class F insulation
- Fluid temperature 95°C.
- Electrical Voltages
24,48,110,220,440,Volts 50 C/S
12,24,48,110,220 Volts DC.

FEATURES :

1. Packless
2. Forged brass body
3. Complete tight shut off
4. Silent in operation
5. Continuous duty moulded Coils
6. Can be mounted in any position
7. Solenoid capable of being turned 360°

Installation : A/C Valves can be mounted in any position but DC Valves must be mounted with Solenoid vertical upright.

FLOCON Valves are made from quality materials and are rigorously tested for leakage and performance. Each valve is subjected to twice the rated voltage plus 1,000 volts at 50 c/s for 60 seconds for insulation test.

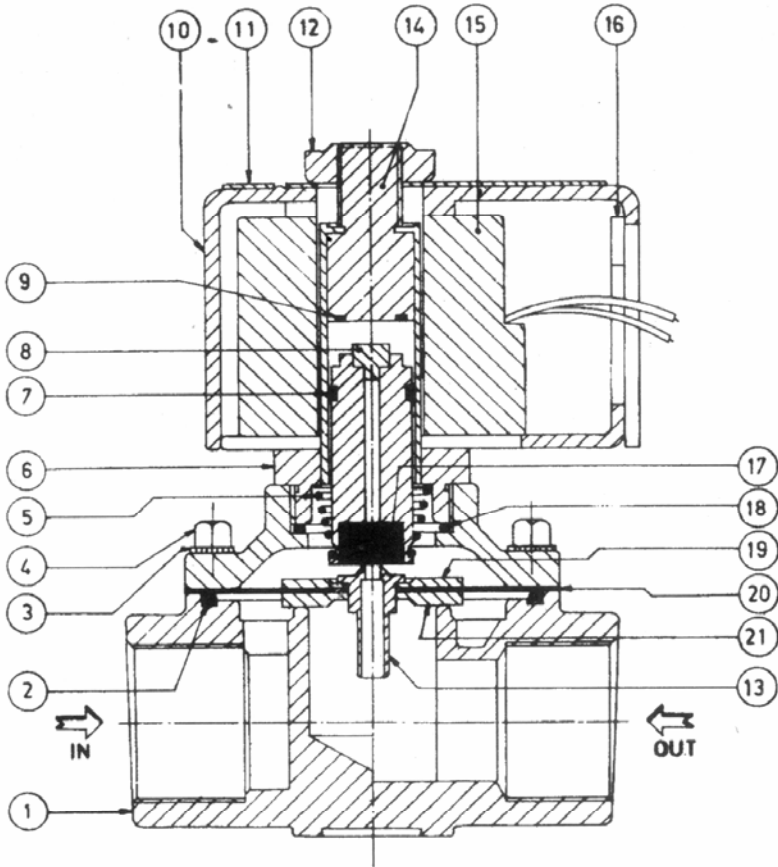


Mounting dimension in MM							
Type	Size	A	B	C	D	E	F
FSD 202	1/4"	70	85	100	58	62	45
FSD 203	3/8"	70	85	100	58	62	45
FSD 204	1/2"	70	85	100	58	62	45
FSD 206	3/4"	70	90	107	58	62	45
FSD 208	1"	95	115	150	95	62	45
FSD 2010	1 1/2"	125	115	150	100	62	45
FSD 2012	2"	150	120	150	100	62	45

VALVE	Pipe (inch)	Orifice (inch)	Maximum Operating Pressure Differential (KG/CM ²)		Safe Body Working Pressure (KG/CM ²)	Flow Factor CV	Maximum A.C. Fluid Temperature °C	WATT RATING		VA - INRUSH	VA - HOLDING
			AIR, GAS	WATER, LIGHT, OIL				AC	DC		
			AC	DC				AC	DC		
FSD 202	1/4"	3/8"	10	8	20	1.2	95	17	15	60	24
FSD 203	3/8"	1/2"	10	8	20	3	95	17	15	60	24
FSD 204	1/2"	3/8"	10	8	20	4	95	17	15	60	24
FSD 205	3/4"	1/2"	10	8	20	5	95	17	15	60	24
FSD 208	1"	1"	10	8	20	13	95	17	15	60	24
FSD 2010	1 1/2"	1 1/4"	10	8	20	22.5	95	17	15	60	24
FSD 2012	2"	1 1/2"	10	8	20	40	95	17	15	60	24

FLOCON PRECISION
INSTRUMENT
CO.

124- A-Z INDUSTRIAL ESTATE, G. K. MARG, MUMBAI - 400 013 TEL. : 2492 6384 / 2492 4333 FAX : 2497 4299
E-mail : flocon@bom3.vsnl.net.in Website : www.floconvalves.com



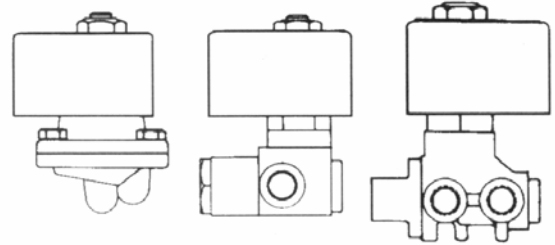
SR. NO.	NAME OF THE PART	PART NO.	MATERIAL	
1.	BODY	FSD - 2001	BRASS	1
2.	DIAPHRAGM	FSD - 2002	NEOPRENE	1
3.	SPRING WASHER	FSD - 2003	C. STEEL	4
4.	SCREW	FSD - 2004	C. STEEL	4
5.	PLUNGER SPRING	FSD - 2005	S S 304	1
6.	TUBE NUT ASSLY	FSD - 2006	S. S. 304/BRASS	1
7.	PLUNGER	FSD - 2007	S S 410	1
8.	RETAINER	FSD - 2008	TEFLON	1
9.	SHADING COIL	FSD - 2009	COPPER	1
10.	COIL HOUSING	FSD - 2010	C. R.C.A.	1
11.	NAME PLATE	FSD - 2011	ALUMINIUM	1
12.	TOP NUT	FSD - 2012	BRASS	1
13.	SEAT NUT	FSD - 2013	S. S. 304	1
14.	STOPPER	FSD - 2014	S. S. 410	1
15.	COIL	FSD - 2015	E.C.W.	1
16.	'L' BRACKET	FSD - 2016	C.R.C.A.	1
17.	PLUNGER SEAT	FSD - 2017	NEOPRENE	1
18.	O RING	FSD - 2018	NEOPRENE	1
19.	DIAPHRAGM PLATE	FSD - 2019	S S 304	1
20.	DIAPHRAGM	FSD - 2020	NEOPRENE	1
21.	DISC	FSD - 2021	NEOPRENE	1

ORDERING INFORMATION :

We must have Type, Pipe size
Operating Pressure, Operating
Voltage and Media handled.

IMPORTANT :

Use Strainers with the valves. Use
the valves only at pressure and
voltage specified on the name plate.



NOTE :

*In line with their policy of continuous product
development, the manufacturer reserves the right
to change specifications without notice.*



ENGINEERS
INDIA LIMITED

IS 2148



AGENCY APPROVALS FOR FLOCON® SOLENOID VALVES PRECISION INSTRUMENT CO. - MUM-13.

ENGINEERS INDIA LIMITED	NEW DELHI	EIL	SOLENOID VALVES
ELECTRONICS REGIONAL TEST LABORATORY	MUMBAI	ERTL	DAMP HEAT TEST REPORT
ELECTRONICS REGIONAL TEST LABORATORY	MUMBAI	ERTL	VIBRATION TEST REPORT
INSTITUTE FOR DESIGN OF ELECTRICAL MEASURING INSTRUMENTS	MUMBAI	IDEMI	IP-65 TEST REPORT
INSTITUTE FOR DESIGN OF ELECTRICAL MEASURING INSTRUMENTS	MUMBAI	IDEMI	IP-65/67 TEST REPORT
CENTRAL MINING RESEARCH INSTITUTE	DHANBAD	CMRI	FLAME PROOF SOLENOID VALVE ENCLOSURE
CHIEF CONTROLLER OF EXPLOSIVES	NAGPUR	CCE	FLAMEPROOF SOLENOID VALVE ENCLOSURE
BUREAU OF INDIAN STANDARDS	MUMBAI	BIS	FLAMEPROOF SOLENOID VALVE ENCLOSURE
DIRECTORS GENERAL FACTORY			
ADVISE SERVICE & LABOUR INSTITUTE	MUMBAI	DGFASLI	FLAMEPROOF SOLENOID VALVE ENCLOSURE
GENELEC LIMITED	MUMBAI	GENELEC	IP-55

MANUFACTURERS :

**PRECISION
INSTRUMENT
CO.**

WORKS :

124, A-Z INDUSTRIAL ESTATE,
G. K. MARG, LOWER PAREL, MUMBAI - 400 013.
PHONE : 2492 6384, 2492 4333
FAX : 022-2497 4299.



Where the Quality goes in before the Name comes on.