

FLOCON SOLENOID VALVES FOR DUST COLLECTOR SERVICE

1/2", 3/4", 1", 1 1/2" BSP/NPT



SERIES
FSDA 200

◀FLOCON▶ Aluminium cast 2 way valves are high flow, diaphragm operated angle body specially designed for reverse jet type dust collectors. The designs have a springless construction with only one moving part, high flow long life and fast opening combine to offer a superior design for the dust collector systems. The high speed operation not only saves the compressed air but it provides the kind of shock wave necessary to free the dust from filter bags.

OPERATION :

Pulse valve is either operated by internal Solenoid Operator or remote pilot solenoid valve. When the pilot solenoid valve is energised, the air trapped above the diaphragm is quickly exhausted through the pilot solenoid valve causing very fast opening of the main valve. When the pilot solenoid valve is de-energised air supplied through the bleed hole is trapped above the diaphragm, causing to close the valve.

CONSTRUCTION :

The Valve body and cover is made out of aluminium alloy castings. The diaphragm and sealing components are made of nitrile rubber. Pipe connection suitable for 1/2", 3/4", 1" and 1 1/2" BSP(F)/NPT(F). Operating pressure 1 to 10kg/cm².

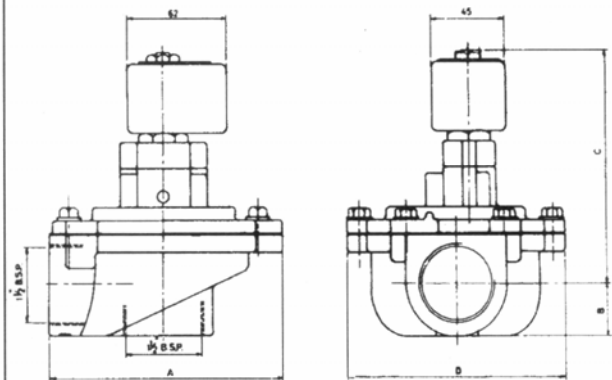
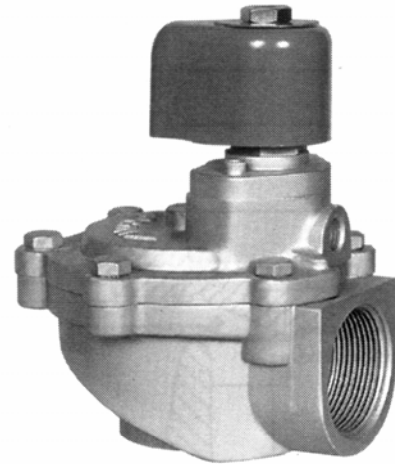
SOLENOID :

1. General purpose solenoid Nema type 1, IP20.
Water tight and dust proof Nema 2 & 3 R, IP55, IP56, IP66, IP67.
2. Explosion proof as per IS 2148 group I, IIA, IIB approved and certified by C M R S, Dhanbad.
3. All solenoid parts coming in contact with fluid media are made of series 300 and 400 stainless steel.
4. Continuous duty moulded coil for class 'F' & 'H' insulation.
5. Fluid temperature up to 80°C.
6. Coil voltage : 24, 48, 110, 240, 440 Volts 50 C/S AC
12, 24, 48, 110, 220 DC.

INSTALLATION:

Valves are mountable in any position without effecting their operation, but as a general practice, we recommend to fit the valve keeping solenoid upright and above the header tank. This prevents scale and water entering the valve. The valves are provided with normal BSP female threads.

◀FLOCON▶ VALVES ARE MADE FROM QUALITY MATERIALS AND ARE RIGOROUSLY TESTED FOR LEAKAGE AND PERFORMANCE. EACH VALVE IS SUBJECTED TO TWICE THE RATED VOLTAGE PLUS 1,000 VOLTS AT 50c/s FOR 60 SECONDS FOR INSULATION TEST.

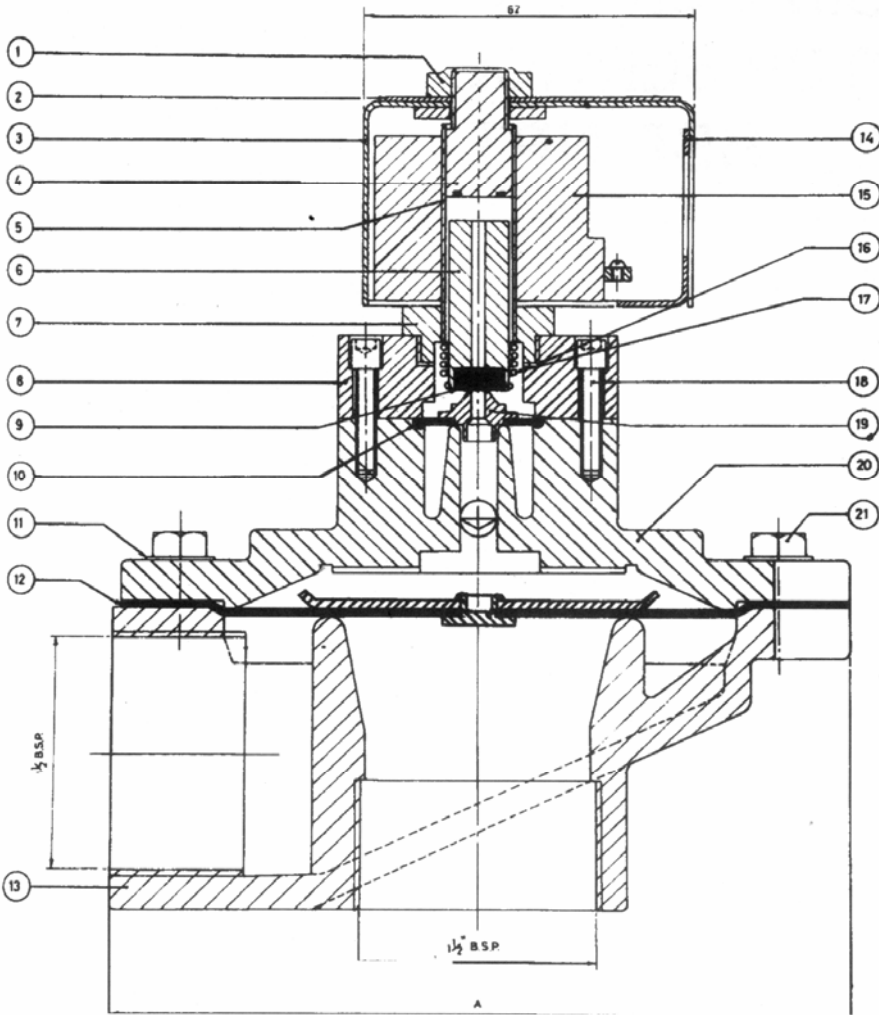


Type	Dimension			
	A	B	C	D
FSDA 206 - 20m	90	22	110	75
FSDA 208 - 25m	90	22	110	75
FSDA 2010 - 40m	136	30	235	134

TYPE	PIPE SIZE	ORIFICE IN MM	OPERATING PRESSURE KG/CM ²		SAFE BODY WORKING PRESSURE KG/CM ²	MAXIMUM AC FLUID TEMP. (°C)
			MIN.	MAX.		
FSDA 204	1/2"	20	0.6	10	15	80
FSDA 206	3/4"	20	0.6	10	15	80
FSDA 208	1"	25	0.6	10	15	80
FSDA 2010	1 1/2"	50	0.6	8.5	12	80

◀FLOCON▶ **PRECISION**
INSTRUMENT
GO

124- A-Z INDUSTRIAL ESTATE, G. K. MARG, MUMBAI - 400 013 TEL. : 2492 6384 / 2492 4333 FAX : 2497 4299
E-mail : flocon@bom3.vsnl.net.in Website : www.floconvalves.com



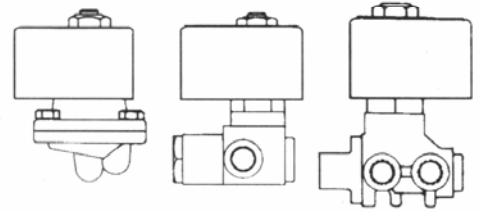
SR. NO.	NAME OF PART	PART NO.	MATERIAL	QTY.
1.	TOP NUT	FSDA 2001	BRASS	1
2.	NAME PLATE	FSDA 2002	ALUMINIUM	1
3.	COIL HOUSING	FSDA 2003	C.R.C.A	1
4.	STOPPER	FSDA 2004	S. S. 410	1
5.	S. S. TUBE	FSDA 2005	S. S. 304	1
6.	PLUNGER	FSDA 2006	S.S. 410	1
7.	BRASS BUT (TUBE)	FSDA 2007	BRASS	1
8.	BONET	FSDA 2008	ALUMINIUM	1
9.	SEAT (PLUNGER)	FSDA 2009	NEOPRENE	1
10.	PILOT DIAPHRAGM	FSDA 20010	NEOPRENE	1
11.	SPRING WASHER	FSDA 20011	C. STEEL	6
12.	MAIN DIAPHRAGM	FSDA 20012	NEOPRENE	1
13.	MAIN BODY	FSDA 20013	ALUMINIUM	1
14.	'L' BRACKET	FSDA 20014	C. R.C.A.	1
15.	COIL	FSDA 20015	E.C.W.	1
16.	GASKET	FSDA 20016	TEFLON	1
17.	SPRING	FSDA 20017	S.S.304	1
18.	ALLEN SCREW	FSDA 20018	C. STEEL	2
19.	DIAPHRAGM RIVET	FSDA 20019	NEOPRENE	1
20.	COVER	FSDA 20020	ALUMINIUM	1
21.	HEX SCREW	FSDA 20021	C. STEEL	6

ORDERING INFORMATION :

We must have Type, Pipe size
Operating Pressure, Operating
Voltage and Media handled.

IMPORTANT :

Use Strainers with the valves. Use
the valves only at pressure and
voltage specified on the name plate.



NOTE :

In line with their policy of continuous product
development, the manufacturer reserves the
right to change specifications without notice.



IS 2148



AGENCY APPROVALS FOR FLOCON[®] SOLENOID VALVES PRECISION INSTRUMENT CO. - MUM-13.

ENGINEERS INDIA LIMITED	NEW DELHI	EIL	SOLENOID VALVES
ELECTRONICS REGIONAL TEST LABORATORY	MUMBAI	ERTL	DAMP HEAT TEST REPORT
ELECTRONICS REGIONAL TEST LABORATORY	MUMBAI	ERTL	VIBRATION TEST REPORT
INSTITUTE FOR DESIGN OF ELECTRICAL MEASURING INSTRUMENTS	MUMBAI	IDEMI	IP-65 TEST REPORT
INSTITUTE FOR DESIGN OF ELECTRICAL MEASURING INSTRUMENTS	MUMBAI	IDEMI	IP-65/67 TEST REPORT
CENTRAL MINING RESEARCH INSTITUTE	DHANBAD	CMRI	FLAME PROOF SOLENOID VALVE ENCLOSURE
CHIEF CONTROLLER OF EXPLOSIVES	NAGPUR	CCE	FLAMEPROOF SOLENOID VALVE ENCLOSURE
BUREAU OF INDIAN STANDARDS	MUMBAI	BIS	FLAMEPROOF SOLENOID VALVE ENCLOSURE
DIRECTORS GENERAL FACTORY			
ADVICE SERVICE & LABOUR INSTITUTE	MUMBAI	DGFASLI	FLAMEPROOF SOLENOID VALVE ENCLOSURE
GENELEC LIMITED	MUMBAI	GENELEC	IP-55

MANUFACTURERS :

**PRECISION
INSTRUMENT
CO.**

WORKS :

124, A-Z INDUSTRIAL ESTATE,
G. K. MARG, LOWER PAREL, MUMBAI - 400 013.
PHONE : 2492 6384, 2492 4333
FAX : 022-24974299.



Where the Quality goes in before the Name comes on.