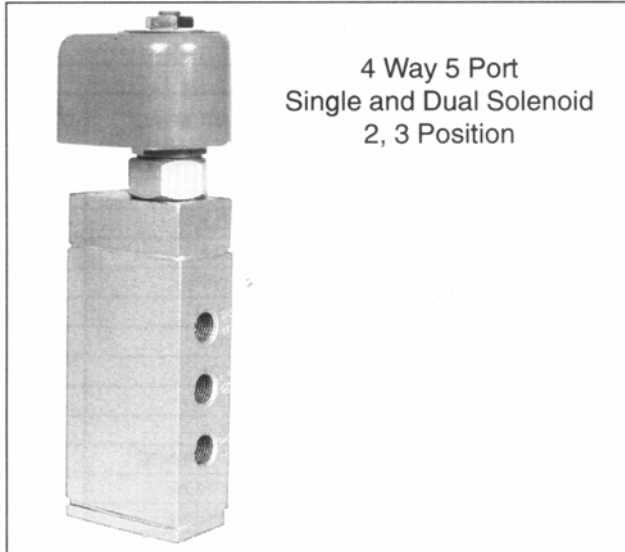


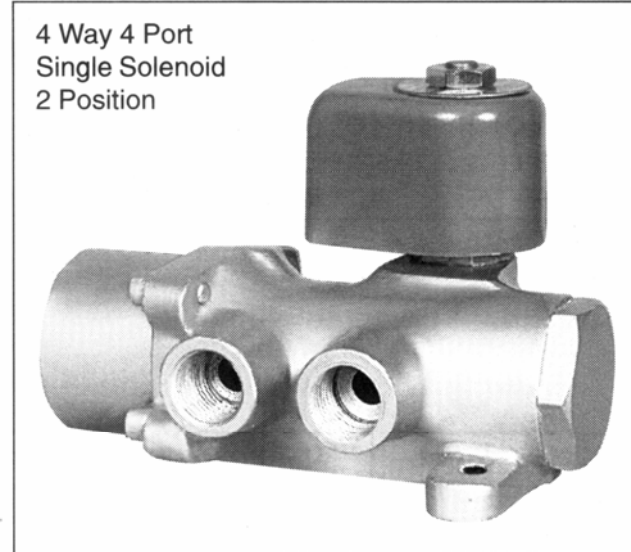
FLOCON 4/2 Way Pilot Operated Poppet type and 4/3 Pilot Operated Spool and Sleeve type. Solenoid Valves 2 position single Solenoid and 3 position dual Solenoids 1/4" to 3/4" BSP/NPT, for Air/Water/Light Oil.

FLOCON

TYPE
FP 400



4 Way 5 Port
Single and Dual Solenoid
2, 3 Position



4 Way 4 Port
Single Solenoid
2 Position

These heavy duty 4 Way Solenoid Valves have Bronze and Aluminium Valve bodies with poppet spool type seats and discs to provide tight seating.

- APPLICATION** – Double acting Cylinders
Machine Tools
Forging Equipments
Moulding Equipments
- OPERATING** – single Solenoid - The Valve changes position when the Solenoid is energised, the valve returns to its original position when de-energised.
- DUAL SOLENOID POSITION 1** – 3 Position.
- POSITION 2** – Solenoid No. 1 is energised and Solenoid No. 2 is de-energised. Pressure at Cylinder A and Exh through cylinder B.
- POSITION 3** – Solenoid No. 2 is energised and Solenoid No. 1 is de-energised. Pressure at cylinder B and exh. through cylinder A.
- POSITION 3** – Both Solenoids are de-energised, all orifices closed and piston blocked.

Valve parts in contact with fluids :

1. Body-Bronze, Bar Stock Aluminium
2. Seats and Discs - Neoprene moulded brass / Nylon
3. Core tube - 304 SS

4. Core & Plunger - 410 SS
5. Spring - 304 SS
6. Shading coil - Copper
7. Orifice Size - 3/8", 1/2"
8. Operating pressure - 1 to 10 kg/cm²
9. Cv Flow factor 2.2 Maximum Fluid Temp. 80°C.

- SOLENOID** – General purpose solenoid enclosure NEMA-1 Weather proof solenoid enclosure NEMA-2 & 3 R Flameproof Coil enclosure IS 2148, 1981 Group I, IIA & IIB approved certified by CMRS, Dhanbad.

◀FLOCON▶ Valves are made from quality materials and tested for leakage and performance. Each valve is subjected to twice the rated voltage plus 1000 volts at 50c/s for 60 seconds for coil insulation test.

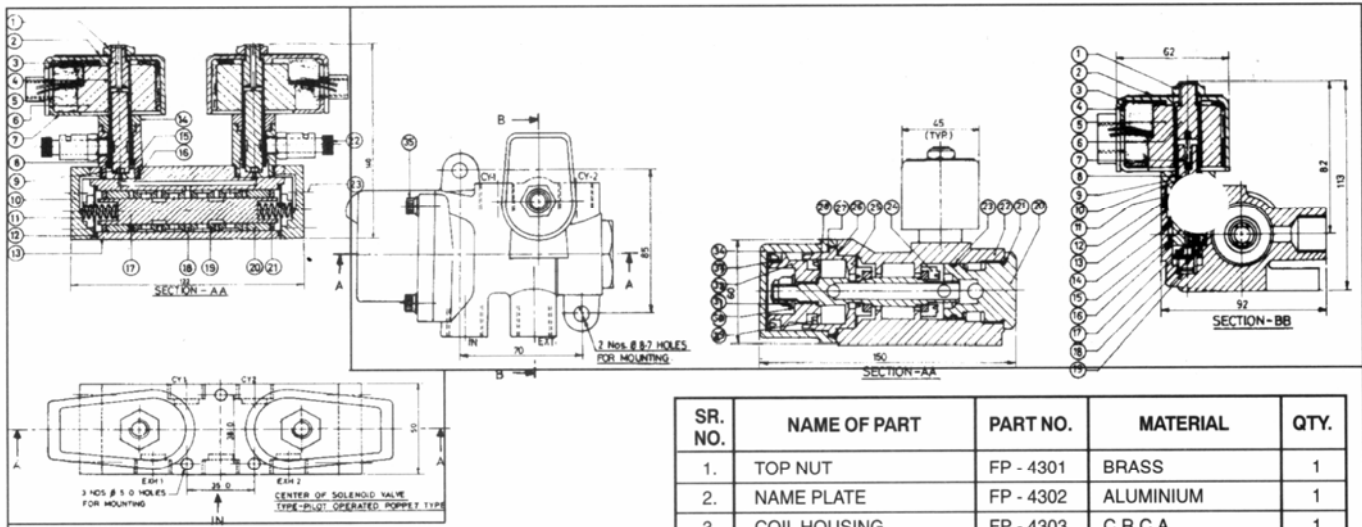
- IMPORTANT** – Minimum operating pressure differential must be maintained between the pressure and exhaust port supply and exhaust must be of full port area.

- Continuous Duty Moulded Coils
- Coils Insulation Class & F & H
- Coil Voltages
24, 48, 120, 240, 440 V. AC 50c/s.
12, 24, 48, 110, 220 V. DC

- FEATURES** – Packless, can be mounted in any position, directly on a pipe. Silent in operation, compact size.

FLOCON **PRECISION**
INSTRUMENT
CO.

124- A-Z INDUSTRIAL ESTATE, G. K. MARG, MUMBAI - 400 013. TEL. : 2492 6384 / 2492 4333 FAX : 2497 4299
E-mail : flocon@bom3.vsnl.net.in Website : www.floconvalves.com



SR. NO.	NAME OF PART	PART NO.	MATERIAL	QTY.
1.	TOP NUT	FP - 2001	BRASS	2
2.	NAME PLATE	FP - 2002	ALUMINIUM	2
3.	STOPPER	FP - 2003	S. S. 430	2
4.	S. S.TUBE	FP - 2004	S.S. 304	2
5.	COIL HOUSING	FP - 2005	C.R.C.A.	2
6.	COIL	FP - 2006	ENAMELLED COPPER WIRE	2
7.	L. BRACKET	FP - 2007	C. R. C. A.	2
8.	PLUNGER	FP - 2008	410 S.S.	2
9.	SEAT	FP - 2009	NEOPRENE	2
10.	END COVER	FP - 2010	ALUMINIUM	2
11.	SPRING	FP - 2011	S. STEEL	2
12.	'O'RING	FP - 2012	NEOPRENE	2
13.	BODY	FP - 2013	ALUMINIUM	1
14.	BRASS NUT	FP - 2014	BRASS	2
15.	PLUNGER SPRING	FP - 2015	S.S.304	2
16.	GASKET	FP - 2016	TEFLON	2
17.	SPINDLE	FP - 2017	S. S. 304	1
18.	'O' RING	FP - 2018	NEOPRENE	5
19.	DISC	FP - 2019	NYLON	4
20.	COLLAR	FP - 2020	NYLON	2
21.	WASHER	FP - 2021	NYLON	2
22.	MANUAL OPERATOR	FP - 2022	BRASS	2
23.	ALLEN SCREW	FP - 2023	C. STEEL	8

SR. NO.	NAME OF PART	PART NO.	MATERIAL	QTY.
1.	TOP NUT	FP - 4301	BRASS	1
2.	NAME PLATE	FP - 4302	ALUMINIUM	1
3.	COIL HOUSING	FP - 4303	C.R.C.A.	1
4.	L. BRACKET	FP - 4304	C.R.C.A.	1
5.	COIL	FP - 4305	E.C.WIRE	1
6.	STOPPER	FP - 4306	S. S.410	1
7.	PLUNGER SPRING	FP - 4307	S.S.304	1
8.	S.S. TUBE	FP - 4308	S.S.304	1
9.	TUBE NUT	FP - 4309	BRASS	1
10.	PLUNGER	FP - 4310	410 S.S.	1
11.	PLUNGER SEAT	FP - 4311	NEOPRENE	1
12.	GASKET	FP - 4312	NEOPRENE	1
13.	INSERT 'O' RING	FP - 4313	NEOPRENE	1
14.	INSERT 'O' RING	FP - 4314	NEOPRENE	1
15.	INSERT	FP - 4315	ALUMINIUM	1
16.	INSERT 'O' RING	FP - 4316	NEOPRENE	1
17.	TRIPOD	FP - 4317	DELTRIN	1
18.	TRIPOD SEAT	FP - 4318	NEOPRENE	1
19.	TRIPOD SPRING	FP - 4319	S.S.304	1
20.	END PLUG	FP - 4320	BRASS	1
21.	'O' RING FOR END PLUG	FP - 4321	NEOPRENE	1
22.	BODY	FP - 4322	BRONZE	1
23.	'O' RING FOR END PLUG	FP - 4323	NEOPRENE	1
24.	DISC	FP - 4324	BRASS NEOPRENE	2
25.	CYLINDER	FP - 4325	BRASS	1
26.	GASKET	FP - 4326	NEOPRENE	1
27.	'O' RING FOR CYLINDER	FP - 4327	NEOPRENE	1
28.	'O' RING FOR SHAFT	FP - 4328	NEOPRENE	1
29.	'U' SEAL	FP - 4329	NEOPRENE	1
30.	WASHER	FP - 4330	BRASS	1
31.	NUT	FP - 4331	BRASS	1
32.	CYLINDER	FP - 4332	BRASS	1
33.	'U' SEAL	FP - 4333	NEOPRENE	1
34.	BONNET	FP - 4334	BRONZE	1
35.	BOLT	FP - 4335	C. STEEL	4

MANUFACTURERS :

**PRECISION
INSTRUMENT
CO.**

WORKS :

124, A-Z INDUSTRIAL ESTATE, G. K. MARG,
LOWER PAREL, MUMBAI - 400 013.
PHONE : 2492 6384, 2492 4333 • FAX : 022-2497 4299.



Where the Quality goes in before the Name comes on.



IS 2148



AGENCY APPROVALS FOR FLOCON SOLENOID VALVES PRECISION INSTRUMENT CO. - MUM-13.

ENGINEERS INDIA LIMITED	NEW DELHI	EIL	SOLENOID VALVES
ELECTRONICS REGIONAL TEST LABORATORY	MUMBAI	ERTL	DAMP HEAT TEST REPORT
ELECTRONICS REGIONAL TEST LABORATORY	MUMBAI	ERTL	VIBRATION TEST REPORT
INSTITUTE FOR DESIGN OF ELECTRICAL MEASURING INSTRUMENTS	MUMBAI	IDEMI	IP-65 TEST REPORT
INSTITUTE FOR DESIGN OF ELECTRICAL MEASURING INSTRUMENTS	MUMBAI	IDEMI	IP-65/67 TEST REPORT
CENTRAL MINING RESEARCH INSTITUTE	DHANBAD	CMRI	FLAME PROOF SOLENOID VALVE ENCLOSURE
CHIEF CONTROLLER OF EXPLOSIVES	NAGPUR	CCE	FLAMEPROOF SOLENOID VALVE ENCLOSURE
BUREAU OF INDIAN STANDARDS	MUMBAI	BIS	FLAMEPROOF SOLENOID VALVE ENCLOSURE
DIRECTORS GENERAL FACTORY			
ADVICE SERVICE & LABOUR INSTITUTE	MUMBAI	DGFASLI	FLAMEPROOF SOLENOID VALVE ENCLOSURE
GENELEC LIMITED	MUMBAI	GENELEC	IP-55